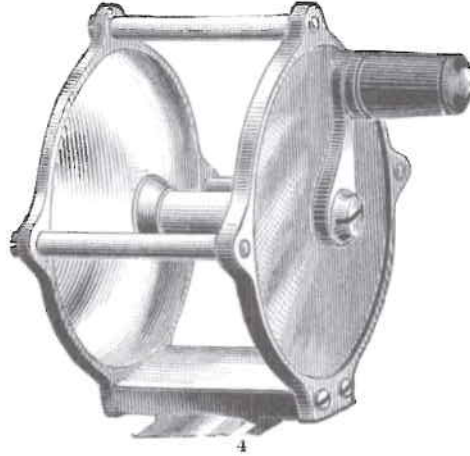


FISHING REELS.

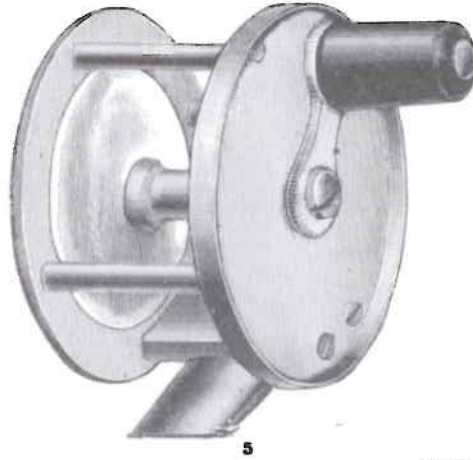
SCREWED RAISED PILLAR CLICK,

With Oil Cap and Safety Bands—Nickel Plated.



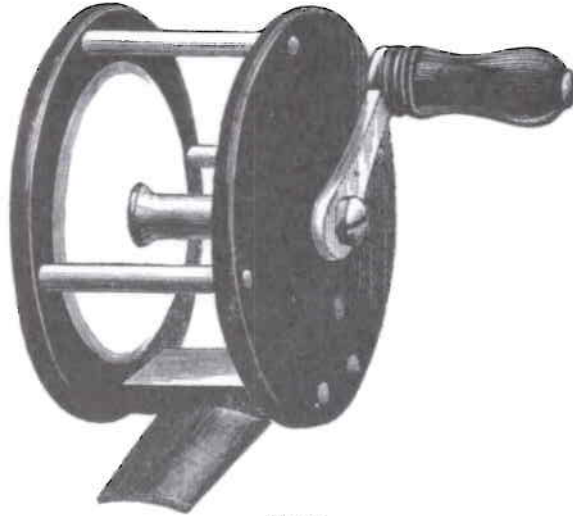
Nos. 46.	6.	25 yds.	1 5/8 in.	diameter of Plate,	\$1.40	each.
	5.	40 "	1 7/8	"	"	1.50	"
	4.	60 "	2 1/8	"	"	1.60	"
	3 1/2.	80 "	2 3/8	"	"	1.70	"
	3.	100 "	2 1/2	"	"	1.80	"
	2.	150 "	2 3/4	"	"	2.00	"

SCREWED BRASS CLICK WITH SAFETY BANDS.



Nos. 56.						BRASS.	OIL CAP.
6.	25 yds.	1 5/8 in.	diameter of Plate,	\$1.15	each.	\$1.40
5 1/2.	30 "	1 3/4	"	"	1.20	"	1.45
5.	40 "	1 7/8	"	"	1.30	"	1.50
4.	60 "	2 1/8	"	"	1.40	"	1.65
3 1/2.	80 "	2 3/8	"	"	1.50	"	1.75

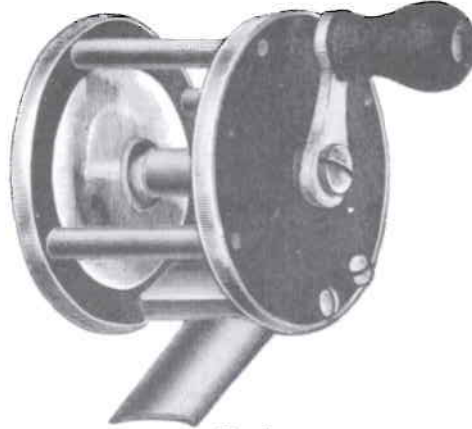
Nickel Plating 25 cents each extra.

BRASS RUBBER CLICK REELS.**No. 4.**

					BRASS.	NICKELLED.
Nos. 66.	6.	25 yds.	1 $\frac{5}{8}$ in.	diameter of Plate,.....	\$.90 each.	\$1.15 each.
	5.	40 "	1 $\frac{7}{8}$ "	" "	1.10 "	1.35 "
	4.	60 "	2 $\frac{1}{8}$ "	" "	1.15 "	1.40 "
	3 $\frac{1}{2}$.	80 "	2 $\frac{3}{8}$ "	" "	1.25 "	1.50 "

RUBBER AND NICKEL PLATED CLICK REELS.

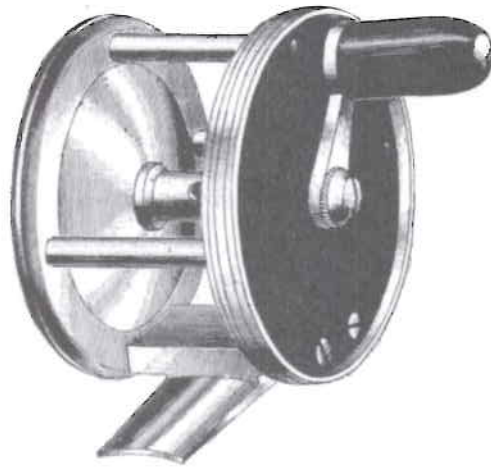
With Metal Bands—(Steel Springs.)

**No. 6.**

Nos. 86.	6.	25 yds.	1 $\frac{5}{8}$ in.	diameter of Plate.....	\$1.60 each.
	5.	40 "	1 $\frac{7}{8}$ "	" "	1.70 "
	4.	60 "	2 $\frac{1}{8}$ "	" "	1.85 "
	3 $\frac{1}{2}$.	80 "	2 $\frac{3}{8}$ "	" "	2.00 "

RUBBER AND NICKEL PLATED CLICK REELS.

With Metal Safety Bands—(Steel Springs.)

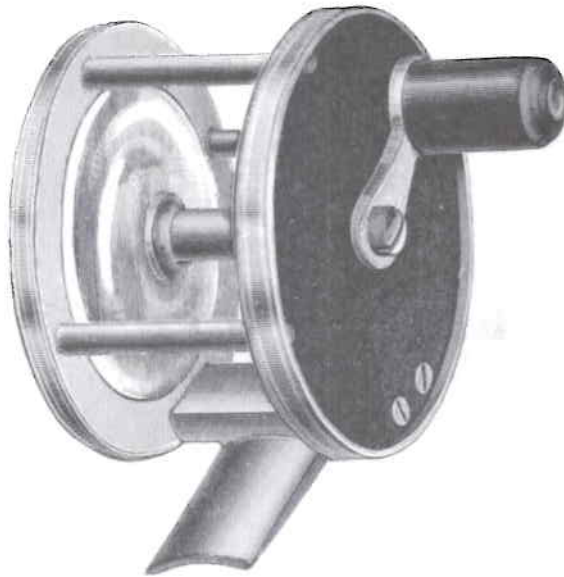


No. 5.

Nos. 96.	6.	25 yds.	$1\frac{5}{8}$	inch. diameter of Plate,	\$2.75 each.
	5.	40 "	$1\frac{7}{8}$	"	" 3.00 "
	4.	60 "	$2\frac{1}{8}$	"	" 3.25 "
	$3\frac{1}{2}$.	80 "	$2\frac{3}{8}$	"	" 3.50 "
	3.	100 "	$2\frac{1}{2}$	"	" 3.75 "
	2.	150 "	$2\frac{3}{4}$	"	" 4.00 "

FINE RUBBER AND GERMAN SILVER CLICK REELS.

With German Silver Safety Bands—(Steel Springs.)



No. 3 1/2.

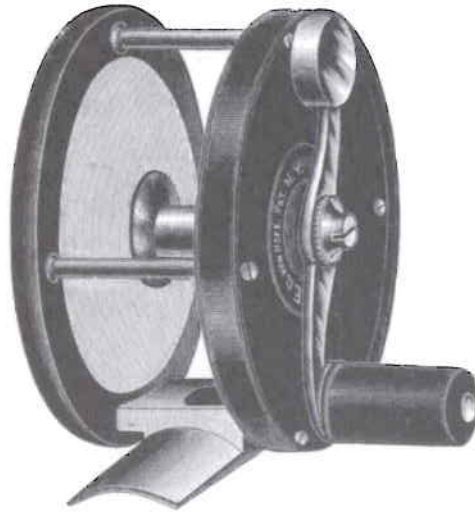
Nos. 115.	5.	40 yds.	1 7/8	inch. diameter of Plate,	\$5.00 each.
	4.	60 "	2 1/8	"	" 5.25 "
	3 1/2.	80 "	2 3/8	"	" 5.50 "
	3.	100 "	2 1/2	"	" 6.00 "
	2.	150 "	2 3/4	"	" 6.50 "

E. VOM HOFÉ'S CELEBRATED TROUT AND BASS FLY REEL.

Extra Fine Quality Rubber and German Silver, with Rubber Safety Bands.

S shape Handle, Steel Cogs and Springs, E. vom Hofé's Sliding Click Drag.

Patented Jan. 23rd, 1883.



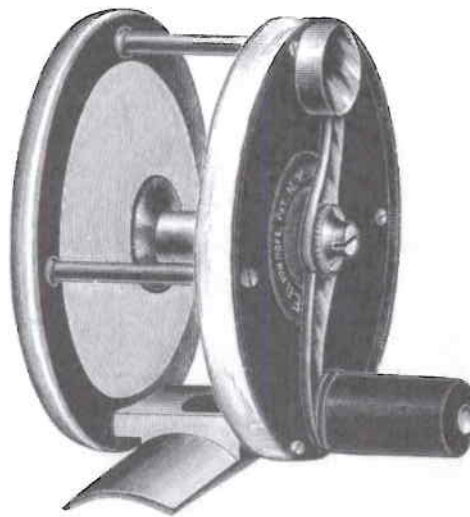
No. 3 1/2.

Nos. 350.	5.	40 yds.	2	inch.	diameter of Plate,	\$4.50 each.
	4.	60 "	2 1/8	"	"	5.00 "
	3 1/2.	80 "	2 3/8	"	"	6.00 "
	3.	100 "	2 1/2	"	"	7.00 "
	2.	150 "	2 3/4	"	"	8.00 "

E. VOM HOFE'S CELEBRATED TROUT AND BASS FLY REEL.

Extra Fine Quality Rubber and German Silver, with German Silver Safety Bands.

S shape Handle, Steel Cogs and Springs, E. vom Hofe's Sliding Click Drag.—Pat'd Jan. 23, 1883.



No. 3 1/2.

Nos. 355.	5.	40 yds.	2	inch. diameter of Plate,	\$7.00 each.
	4.	60 "	2 1/8	"	"	8.00 "
	3 1/2.	80 "	2 3/8	"	"	9.00 "
	3.	100 "	2 1/2	"	"	10.00 "
	2.	150 "	2 3/4	"	"	12.00 "

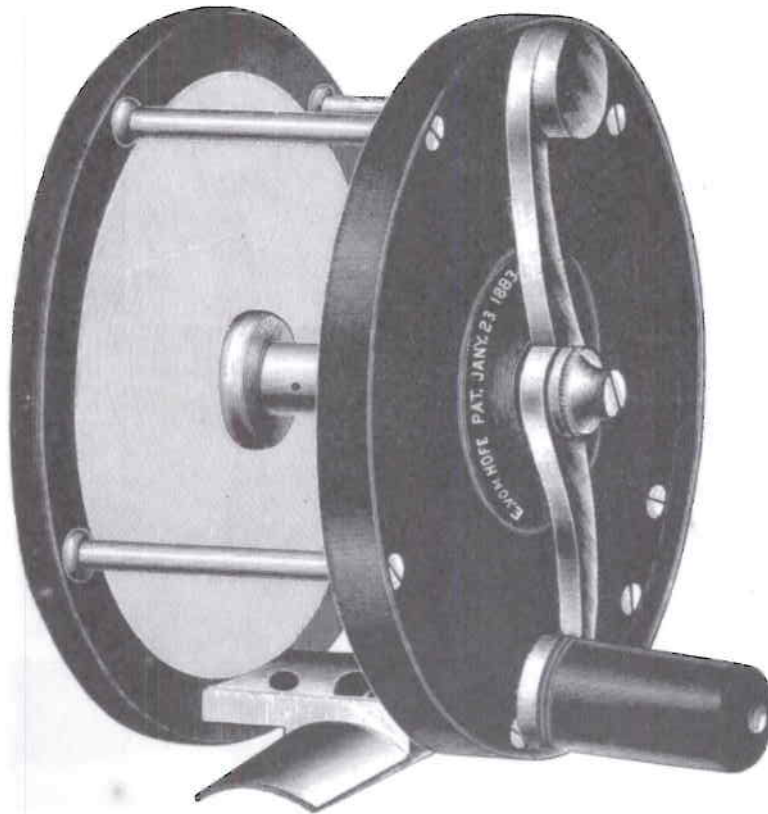
The above Reel is of the finest finish, the strongest and most durable, also the lightest Reel made.

Aluminium Reels made to order.

E. VOM HOFE'S SALMON AND GRILSE CLICK REELS.

Fine Rubber and German Silver with Rubber Safety Bands, Roller Bars.

S shape Handle, Steel Cogs and Springs, E. vom Hofe's Sliding Click Drag.—Pat'd Jan. 23, 1883.



No. 40.

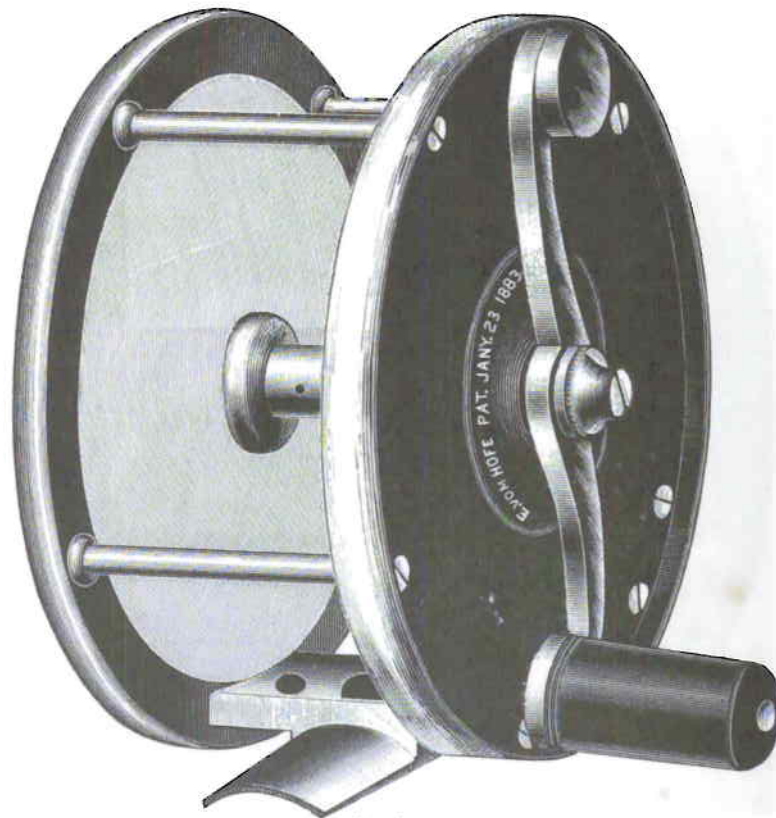
Nos. 403.	3 ⁰ .	75 yds.	3 ³ / ₄ inch.	diameter of Plate,	\$14.00	each.
	4 ⁰ .	100 "	4	" "	16.00	"
	5 ⁰ .	120 "	4 ³ / ₈	" "	18.00	"

E. VOM HOFE'S SALMON AND GRILSE CLICK REELS.

Extra Fine Rubber and German Silver, with German Silver Safety Bands, Roller Bars

S shape Handle, Steel Cogs and Springs, E. vom Hofe's Sliding Click Drag.

Patented Jan. 23rd, 1883.



No. 40.

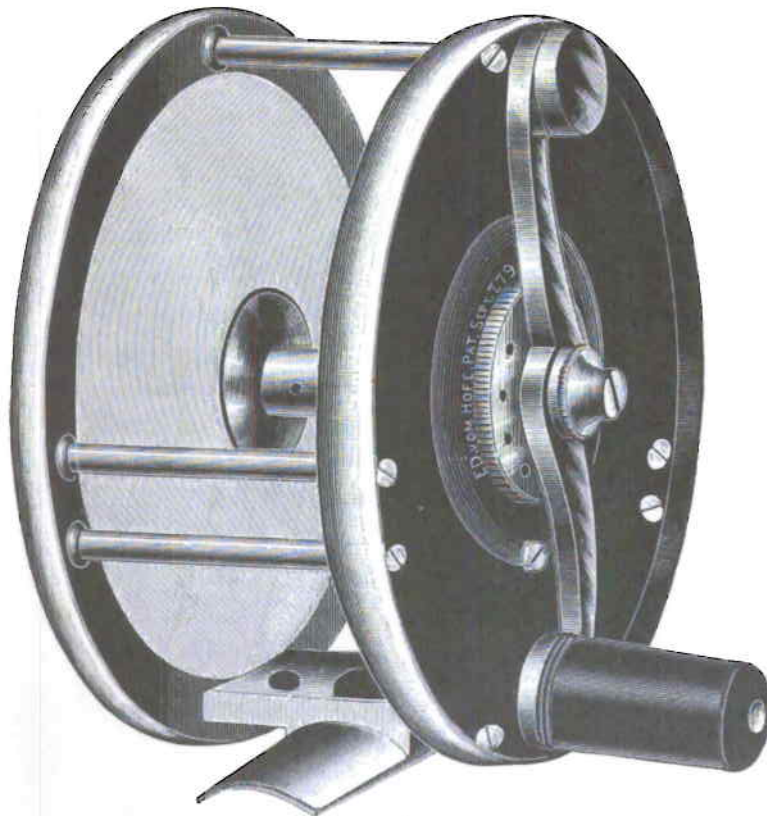
Nos. 413.	3/0.	75 yds.	3 3/4 inch.	diameter of Plate,	\$20.00 each.
	4/0.	100 "	4	" "	22.50 "
	5/0.	120 "	4 3/8	" "	25.00 "

E. VOM HOFÉ'S
"CELEBRATED" SALMON AND GRILSE CLICK REEL.

Finest Quality Rubber and German Silver, Steel Pivot, with German Silver Safety Bands, Roller Bars,

Screw-off S shape Handle, E. vom Hofé's Patented Regulating Tension on Handle Side, Patented September 2nd, 1879.

Steel Cogs and Springs, E. vom Hofé's Sliding Click Drag.—Pat'd. Jan. 23, '83.

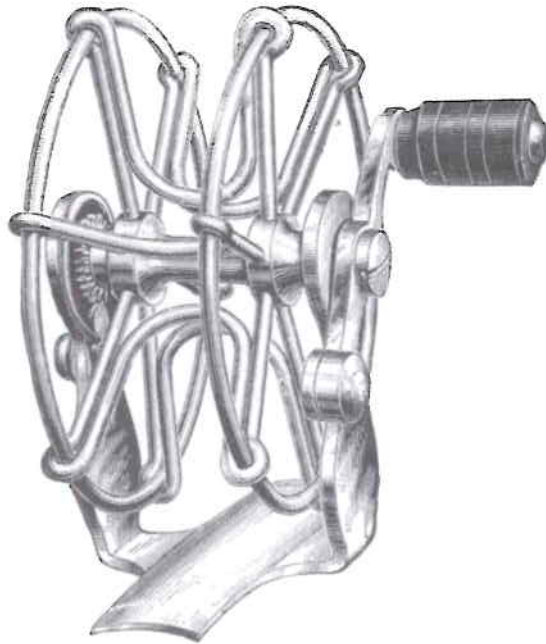


No. 40.

Nos. 423.	$\frac{3}{8}$ o.	75 yds.	$3\frac{3}{4}$ inch.	diameter of Plate,	\$30.00 each.
	$\frac{1}{2}$ o.	100 "	4 "	" "	32.50 "
	$\frac{5}{8}$ o.	120 "	$4\frac{3}{8}$ "	" "	35.00 "

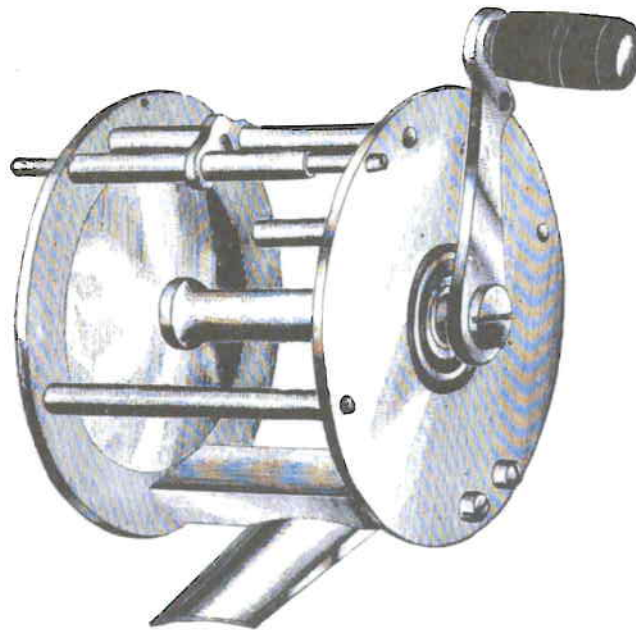
The above Reel I can highly *recommend*. It has the endorsement of all *Salmon Anglers* who have used it.

THE ACME WIRE REELS.



Very Light and Handsomely Nickel Plated,.....\$1.25 each.

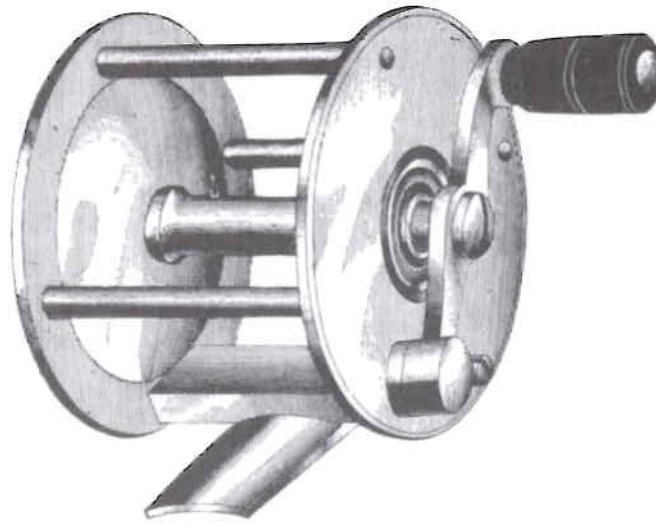
PLAIN BRASS REELS WITH STOP.



No. 3.

Nos. 136.	6.	25 yds.	1 5/8	inch. diameter of Plate,	50 cents each.
	5.	40 "	1 7/8	"	" 55 " "
	4.	60 "	2 1/8	"	" 60 " "
	3 1/2.	80 "	2 3/8	"	" 70 " "

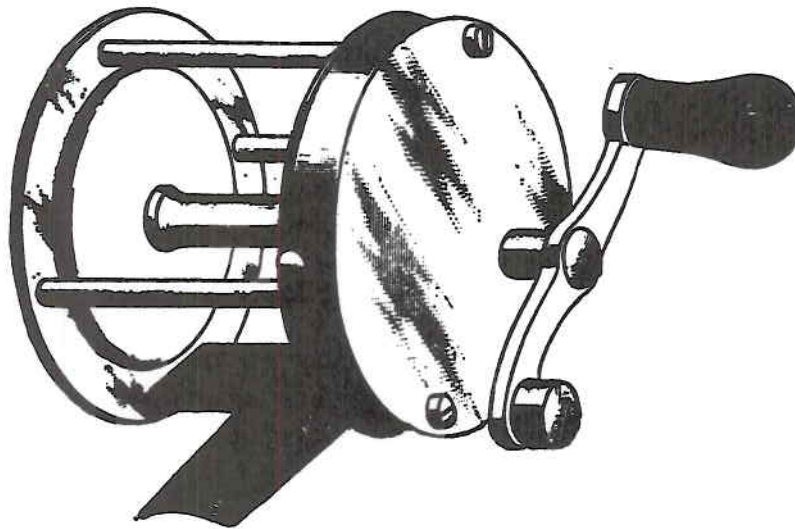
PLAIN BRASS BALANCE HANDLE REELS.



No. 4.

Nos. 146.	6.	25 yds.	$1\frac{5}{8}$ inch.	diameter of Plate,	45 cents each.
	5.	40 "	$1\frac{7}{8}$	"	" 50 " "
	4.	60 "	$2\frac{1}{8}$	"	" 55 " "
	$3\frac{1}{2}$.	80 "	$2\frac{3}{8}$	"	" 65 " "

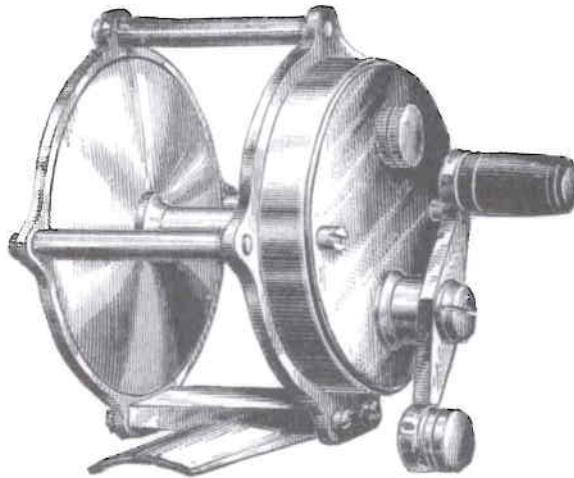
**SCREWED, PLAIN, MULTIPLYING, BALANCE HANDLE
REELS, WITH DRAG.**



No. 4.

				BRASS.	NICKELED.
Nos. 216.	6.	25 yds.	$1\frac{5}{8}$ inch.	diameter of Plate, . . . \$.90 each.	\$1.15 each.
	$5\frac{1}{2}$.	30 "	$1\frac{3}{4}$	" " . . . 1.00 "	1.25 "
	5.	40 "	$1\frac{7}{8}$	" " . . . 1.10 "	1.35 "
	4.	60 "	$2\frac{1}{8}$	" " . . . 1.15 "	1.40 "
	$3\frac{1}{2}$.	80 "	$2\frac{3}{8}$	" " . . . 1.25 "	1.50 "

**BEST BRASS MULTIPLYING REELS, RAISED PILLAR,
AND TURN CLICKS ON HANDLE SIDE.**

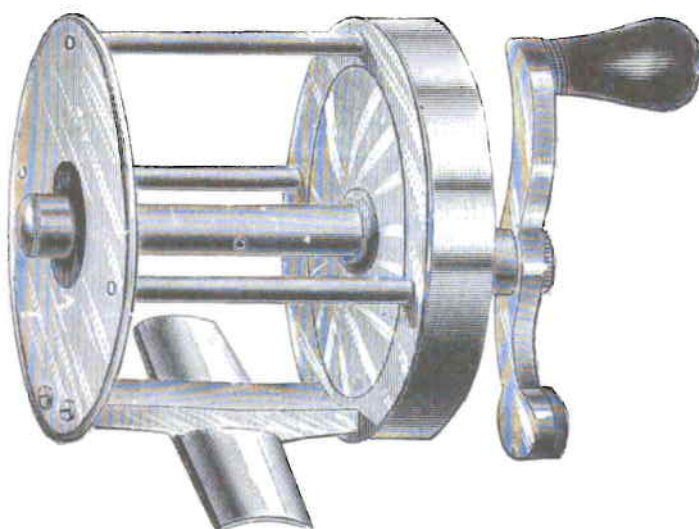


No. 3 1/4.

				BRASS.	NICKELD.
Nos. 225.	5.	40 yds.	1 7/8 inch. diameter of Plate,	\$2.00 each.	\$2.25 each.
	4.	60 "	2 1/8 " "	2.25 "	2.50 "
	3 1/2.	80 "	2 3/8 " "	2.50 "	2.75 "
	3.	100 "	2 1/2 " "	2.65 "	3.00 "
	2.	150 "	2 3/4 " "	2.75 "	3.25 "

BEST BRASS MULTIPLYING REELS.

"Screw-off Oil Cap," S shape Balance Handle.



No. 3 1/2.

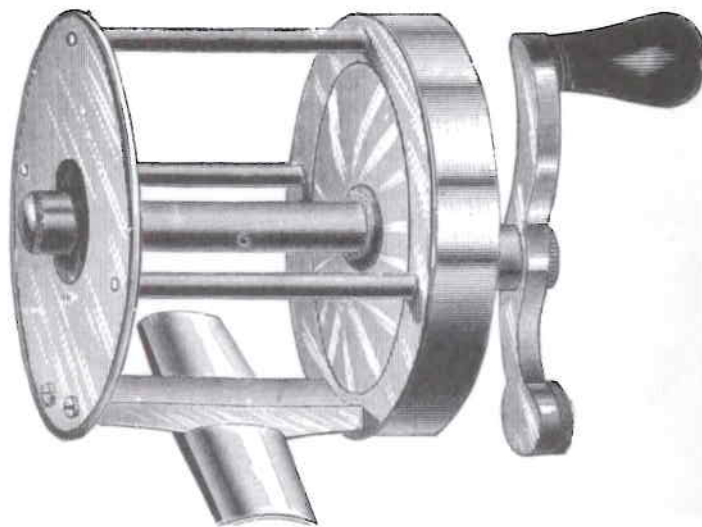
				BRASS.	NICKELLED.
Nos. 236.	6.	25 yds.	1 5/8 inch. diameter of Plate,....	\$1.25 each.	\$1.75 each.
	5.	40 "	1 7/8 " " "	1.50 "	2.00 "
	4.	60 "	2 1/8 " " "	1.75 "	2.25 "
	3 1/2.	80 "	2 3/8 " " "	2.00 "	2.50 "
	3.	100 "	2 1/2 " " "	2.25 "	2.75 "
	2.	150 "	2 3/4 " " "	2.50 "	3.50 "
	1.	200 "	3 " " "	2.75 "	3.25 "
	1 1/2.	250 "	3 1/8 " " "	3.00 "	3.50 "
	2.	300 "	3 3/8 " " "	3.50 "	4.00 "

Lifting Drags, 50 cents each, extra.

Patent Sliding Click, 75 " " "

BEST GERMAN SILVER MULTIPLYING REELS.

"Screw-off Oil Cap," S shape Balance Handle.



No. 3 1/2.

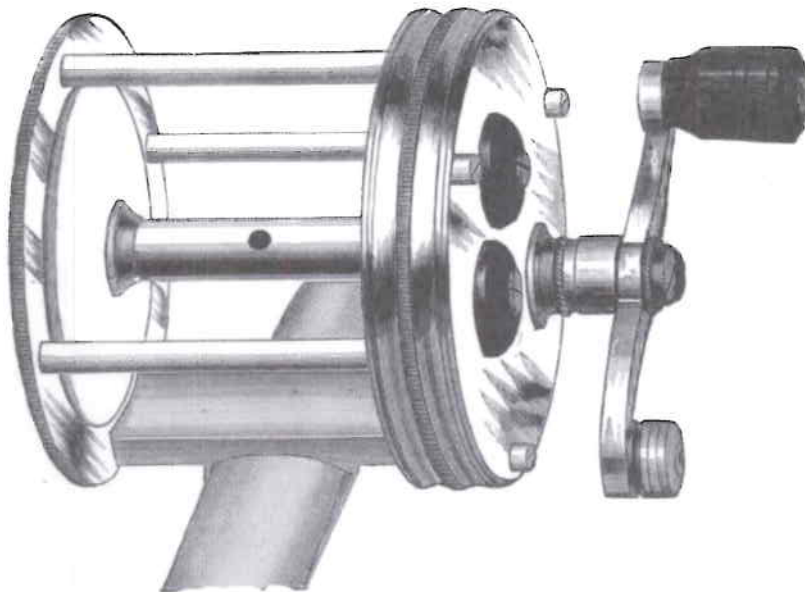
Nos. 246.	6.	25 yds.	1 5/8 inch.	diameter of Plate,	\$2.25 each.
	5.	40 "	1 7/8	"	"	2.50 "
	4.	60 "	2 1/8	"	"	3.00 "
	3 1/2.	80 "	2 3/8	"	"	3.50 "
	3.	100 "	2 1/2	"	"	3.75 "
	2.	150 "	2 3/4	"	"	4.25 "
	1.	200 "	3	"	"	4.75 "
	1/0.	250 "	3 1/8	"	"	5.25 "
	2/0.	300 "	3 3/8	"	"	6.00 "

German Silver Lifting Drags,.....\$1.00 each, extra.

" " Sliding Click,..... 1.50 " "

FOUR-PLY MULTIPLYING REELS.

With Sliding Drag and Sliding Click, "Screw-off Oil Cap, S shape Handle, Nickel Plated.



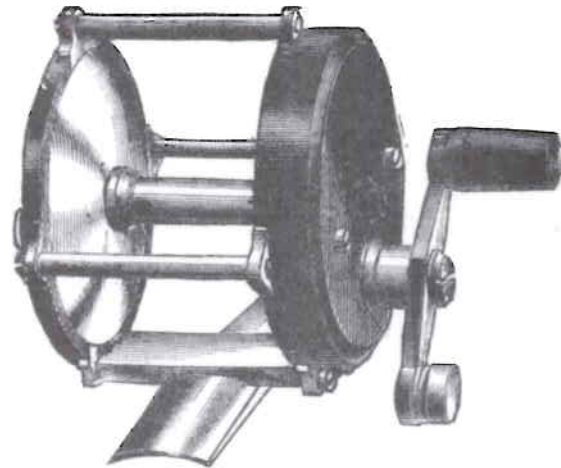
No. 3.

Nos. 255.	5.	40 yds.	$1\frac{7}{8}$ inch.	diameter of Plate,	\$4.25 each.
	4.	60 "	$2\frac{1}{8}$	"	" 4.50 "
	$3\frac{1}{2}$.	80 "	$2\frac{3}{8}$	"	" 4.75 "
	3.	100 "	$2\frac{1}{2}$	"	" 5.00 "

**PATENT RUBBER AND NICKEL PLATED, RAISED PILLAR
MULTIPLYING REELS.**

With Patented Sliding Click Drag.—Patented January 23rd, 1883.

(For Illustration of Click Drag, see Page 49.)



No. 4.

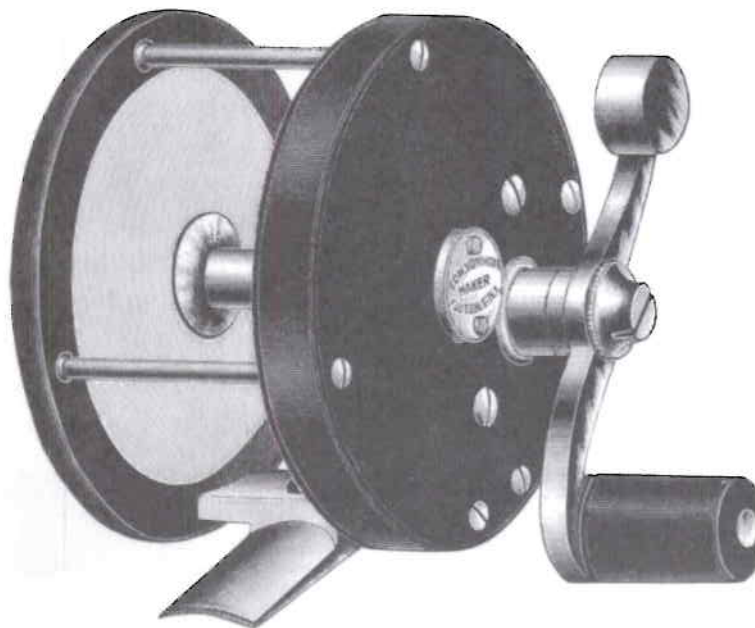
Nos. 265.	5.	40 yds.	$1\frac{1}{8}$ inch.	diameter of Plate,	\$3.25 each.
	4.	60 "	$2\frac{1}{8}$	"	" 3.50 "
	$3\frac{1}{2}$.	80 "	$2\frac{3}{8}$	"	" 4.00 "
	3.	100 "	$2\frac{1}{2}$	"	" 4.50 "
	2.	150 "	$2\frac{3}{4}$	"	" 5.00 "
	1.	200 "	3	"	" 5.50 "

E. VOM HOFÉ'S
 "CELEBRATED" BLACK BASS REEL.

Fine Quality Rubber and German Silver, Full Steel Pivot.

S shape Balance Handle, Sliding Oil Cap, E. vom Hofe's Sliding Click Drag.—Pat'd Jan. 23, '83.

(For Illustration of Click Drag, see Page 49.)



No. 2.

Nos. 454.	4.	60 yds.	$2\frac{1}{8}$ inch.	diameter of Plate,	\$ 8.00 each.
	$3\frac{1}{2}$.	80 "	$2\frac{3}{8}$	"	" 9.00 "
	3.	100 "	$2\frac{1}{2}$	"	" 10.00 "
	2.	150 "	$2\frac{3}{4}$	"	" 11.00 "

A very free running *Reel* for Minnow Casting.

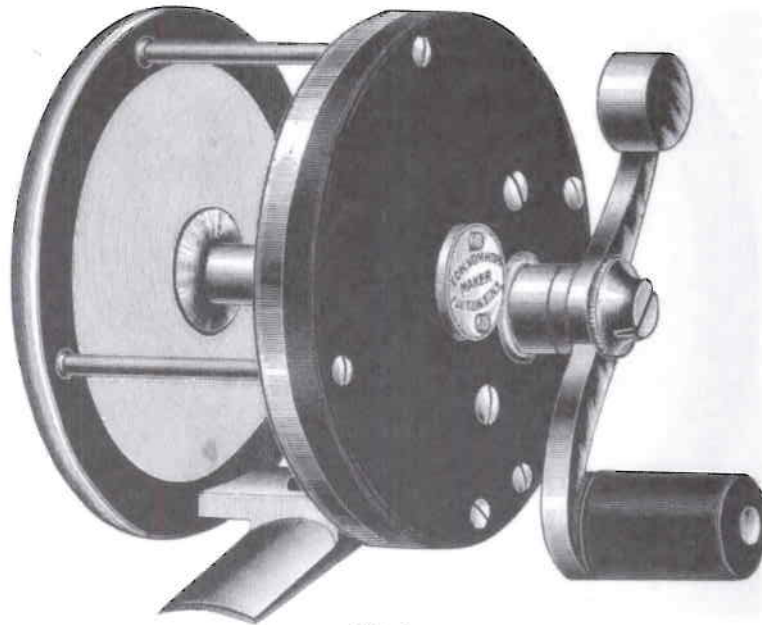
E. VOM HOFE'S "CELEBRATED" BLACK BASS REEL.

Finest Quality Rubber and German Silver, Full Steel Pivot, with German Silver Bands.

S shape Balance Handle, Sliding Oil Cap, E. vom Hofe's Sliding Click Drag.

Patented January 23rd, 1883.

(For Illustration of Click Drag, see next Page.)



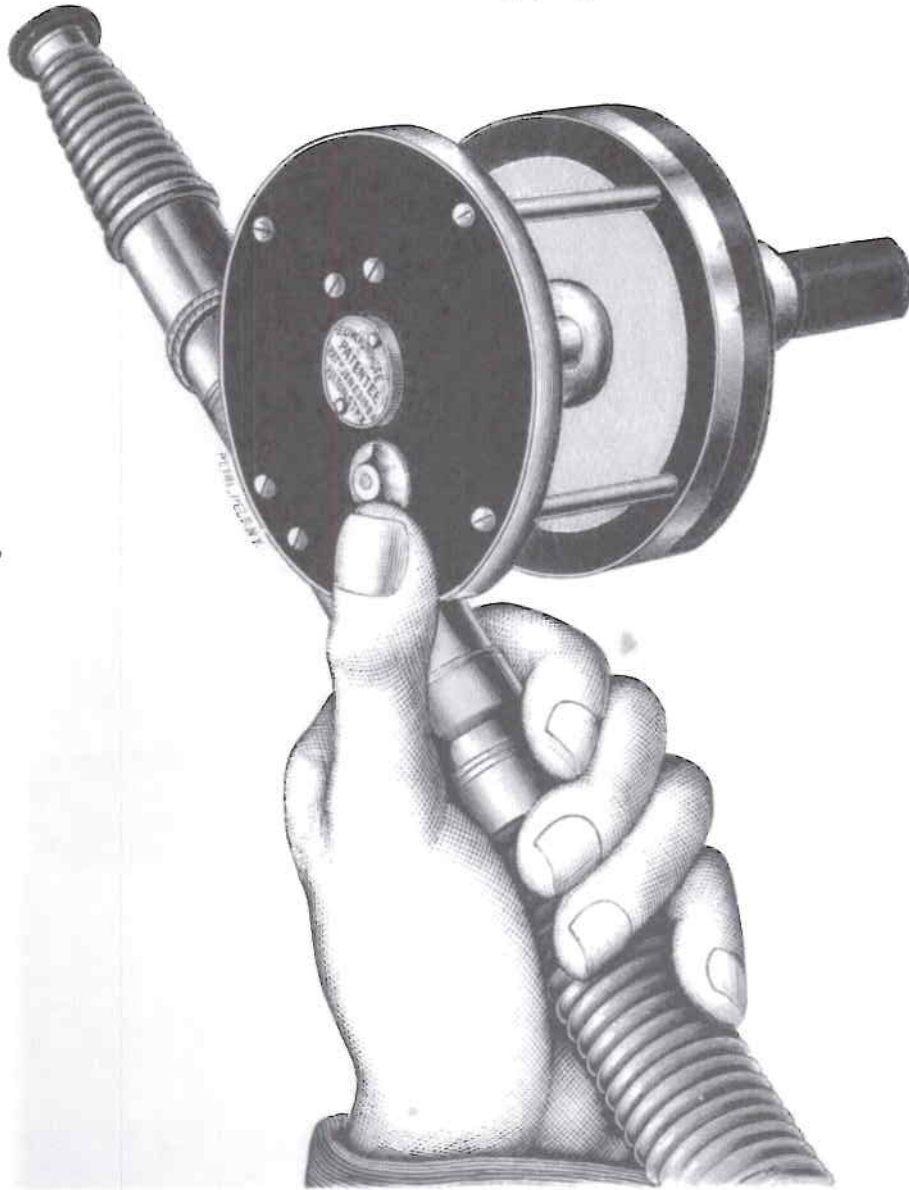
No. 2.

Nos. 464.	4.	60 yds.	2 $\frac{1}{8}$ inch.	diameter of Plate,	\$11.00 each.
	3 $\frac{1}{2}$.	80 "	2 $\frac{3}{8}$	"	" 12.00 "
	3.	100 "	2 $\frac{1}{2}$	"	" 13.00 "
	2.	150 "	2 $\frac{3}{4}$	"	" 14.00 "

These Reels are the strongest and most durable Reels for Minnow Casting.
Aluminium Reels made to order.

This Cut represents Vom Hofe's Click Drag in Operation.

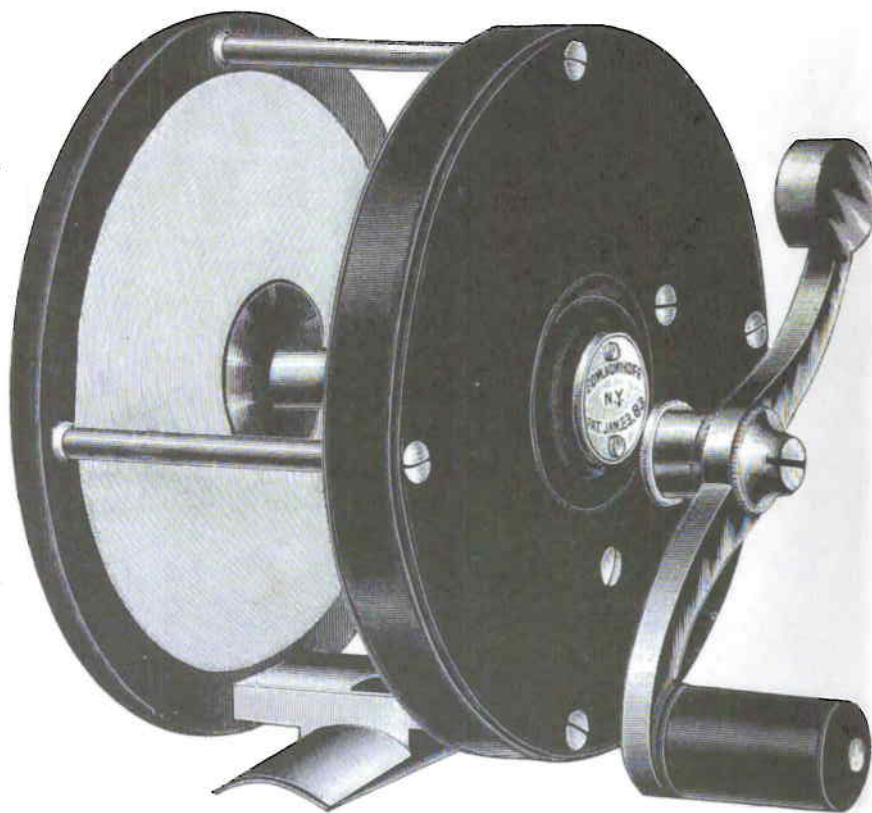
Patented January 23rd, 1883.



E. VOM HOFE'S
CELEBRATED STRIPED BASS AND TARPON REELS.

Fine Quality Rubber and German Silver, Full Steel Pivot.

*S shaped Balance Handle to screw off, Sliding Oil Cap, E. vom Hofe's Sliding Click Drag.
Patented January 23rd, 1883.*



No. 4/0.

Nos. 471.	1/0.	250 yds.	3 1/8 inch.	diameter of Plate,	\$15.00 each.
	2/0.	300 "	3 3/8 "	" "	17.00 "
	3/0.	400 "	3 5/8 "	" "	20.00 "
	4/0.	500 "	3 7/8 "	" "	23.00 "

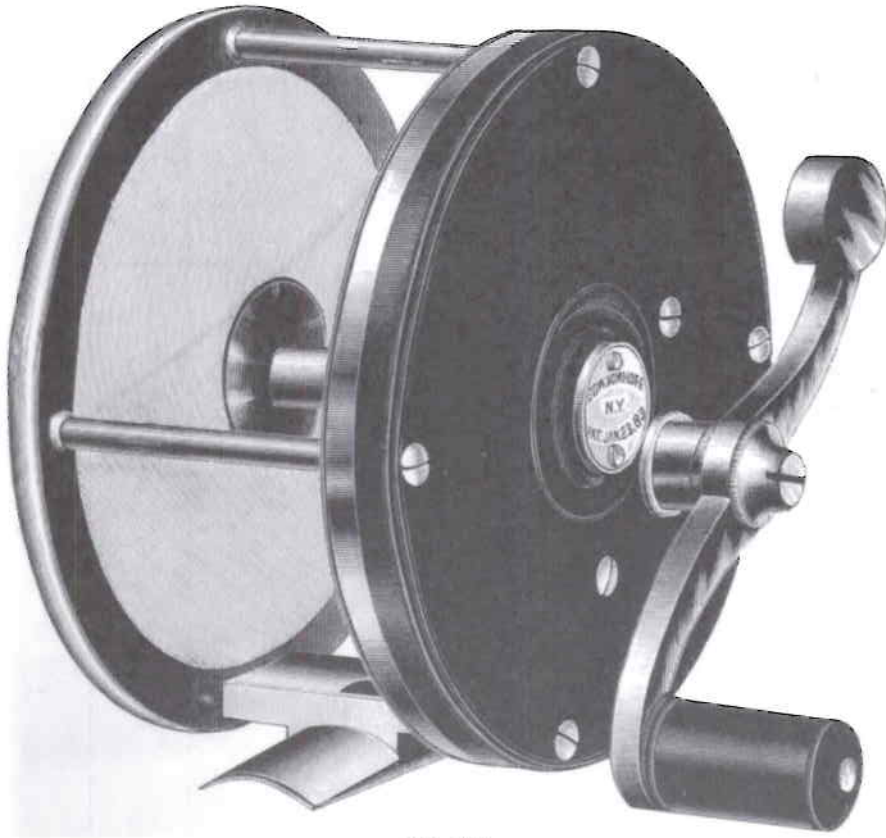
The No. 4/0 Reel, being specially adapted for *Tarpon Fishing*, is by far lighter and stronger than any Reel in the market.

E. VOM HOFE'S

CELEBRATED STRIPED BASS AND TARPON REELS.

Finest Quality Rubber and German Silver, Full Steel Pivot with German Silver Bands.

S shaped Balance Handle to screw off, Sliding Oil Cap, E. vom Hofe's Sliding Click Drag.
Patented January 23rd, 1883.



No. 4/0.

Nos. 481.	1/0.	250 yds.	3 1/8 inch.	diameter of Plate,	\$18.00	each.
	2/0	300 "	3 3/8 "	" "	"	20.00	"
	3/0	400 "	3 5/8 "	" "	"	23.00	"
	4/0	500 "	3 7/8 "	" "	"	26.00	"

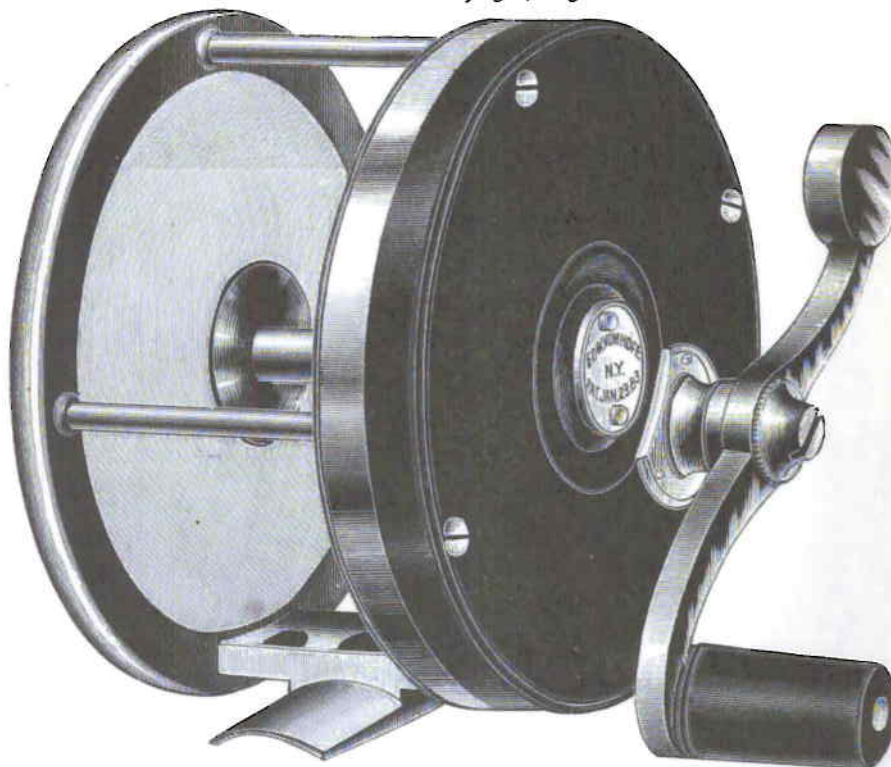
The above Reels are *strong* and durable. For their lightness and free running qualities they are surpassed by no other make.

The No. 4/0 Reel being specially adapted for Tarpon Fishing.

E. VOM HOFE'S CELEBRATED "STAR" RUBBER REEL.

Finest Quality Rubber and German Silver, Full Steel Pivot, and German Silver Bands
with Steel Shaft.

S shaped Balance Handle to screw off, Sliding Oil Cap, E. vom Hofe's Sliding Click Drag.
Patented January 23rd, 1883.



No. 3/0.

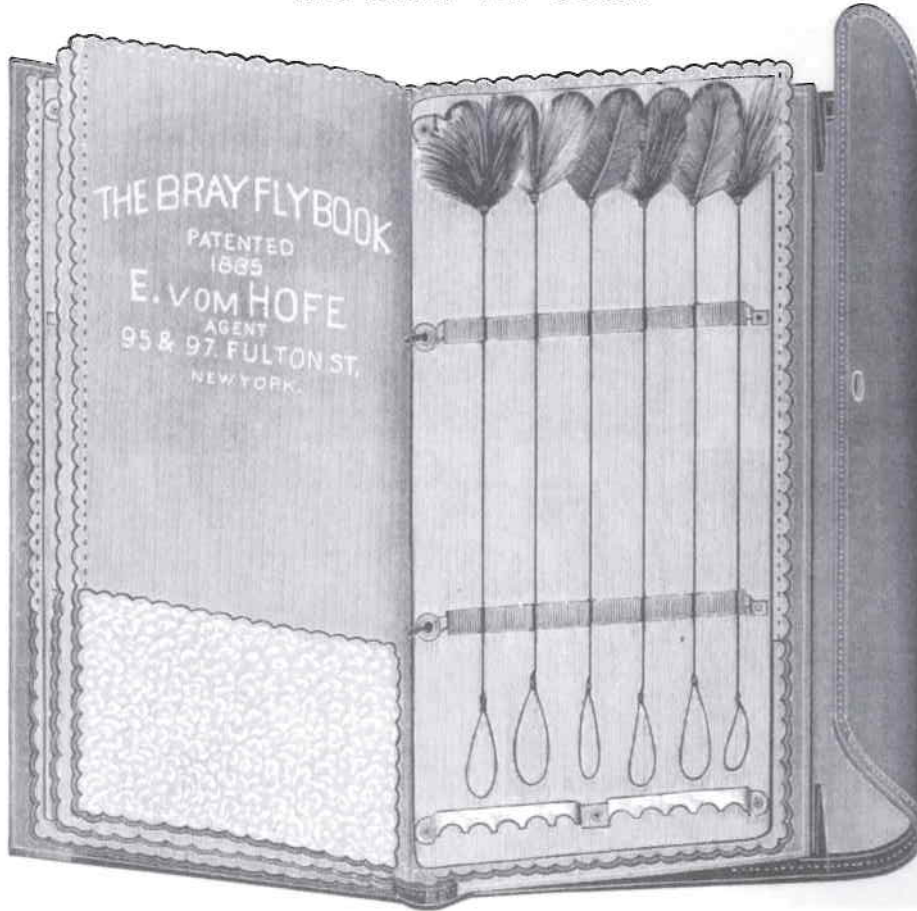
Nos. 501.	1/0.	250 yds.	3 1/8 inch.	diameter of Plate,	\$32.00 each.
	2/0.	300 "	3 3/8 "	"	"	35.00 "
	3/0.	400 "	3 5/8 "	"	"	38.00 "
	4/0.	500 "	3 7/8 "	"	"	43.00 "

The "*Star*" Rubber Reel as first invented by myself, has stood the severest tests during the past 20 years, and with the additional improvements which I have applied from time to time, this reel now stands the *highest* of any Grade manufactured up to the present time.

It is chiefly used for Surf Bass, Channel Bass, Tarpon, and other large Game Fish.

Notice.—This Reel is manufactured for my Custom trade only.

THE BRAY FLY BOOK.

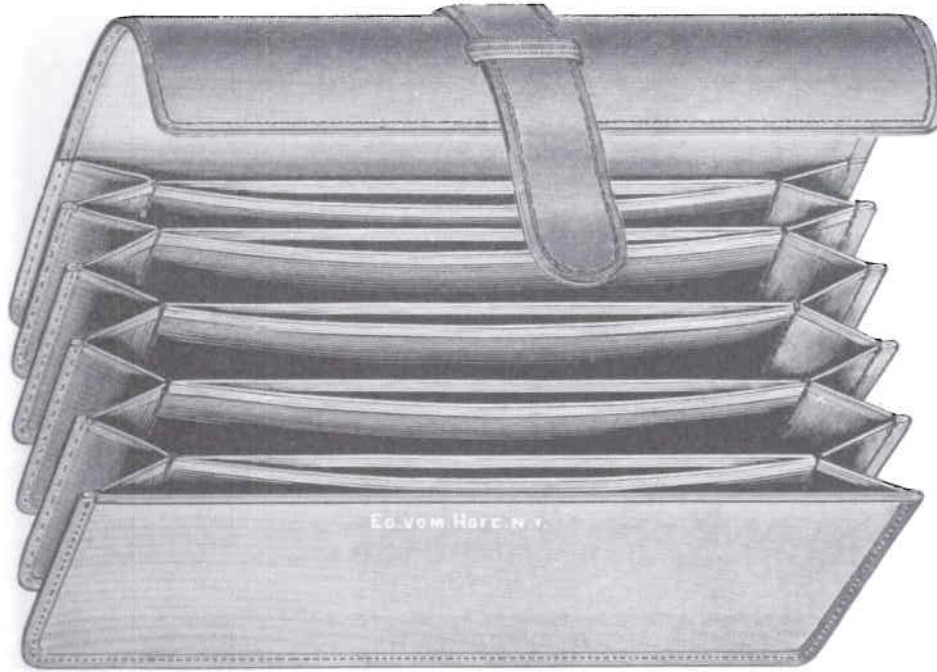


The Bray Fly Book has given the best satisfaction of any we have ever seen, and no Angler has ever used it who is not enthusiastic in its praise. The Flies may be attached as quickly as thrown into an ordinary envelope, and at the same time are perfectly secure, while they may be as readily detached. The snell, regardless of its length, is at all times kept perfectly straight (the advantage of which every Angler will quickly appreciate), and each Fly stands out so that one can see in an instant his entire assortment and select the one he desires.

PRICES IN SHEEPSKIN.

3	Sheets to hold	6	dozen,	\$4 00 each.
3	"	"	12	" 5.00 "
2	"	"	4	" 4.00 "
2	"	"	8	" 4.50 "
1	"	"	2	" 4.00 "
1	"	"	4	" 4.00 "
	Morocco Cover, 2 Pockets,			1.00 extra.

HOOK AND TACKLE BOOKS.



Nos. 1010, 1014 and 4193.

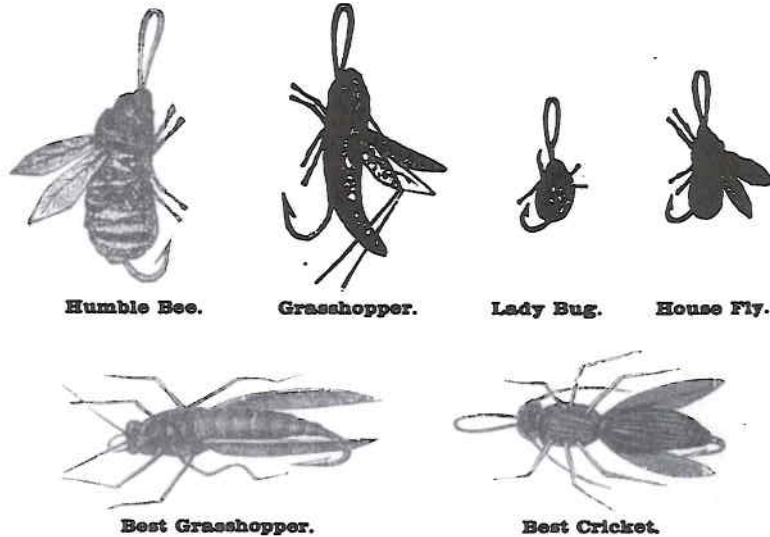
No. 1010.	Canvas, 6 inch., with large and small canvas pockets and strap, 6 pockets,	\$0.50 each.
	Canvas, 7 inch., with large and small canvas pockets and strap, 6 pockets,75 "
	Canvas, 8 inch., with large and small canvas pockets and strap, 6 pockets,	1.00 "
No. 1014.	Leather, 6 inch., with large and small canvas pockets and strap, 6 pockets,75 "
	Leather, 7 inch., with large and small canvas pockets and strap, 6 pockets,	1.00 "
	Leather, 8 inch., with large and small canvas pockets and strap, 5 pockets,	1.00 "
No. 133.	Morocco, 6½ inch., with large and small canvas pockets and strap, 4 pockets,75 "
	Morocco, 6½ inch., with large and small canvas pockets and strap, 5 pockets,	1.00 "
No. 516.	Morocco, 7½ inch., with large and small pockets, strap and buckle, 6 pockets,	\$1.00 "
	Morocco, 8½ inch., with large and small pockets, strap and buckle, 6 pockets,	1.25 "

(Continued on next Page.)

HOOK AND TACKLE BOOKS—(Continued.)

No. 4193.	New Pattern, Leather, 7 inch., with large and small pockets and strap, 6 pockets,	1.25 each.
	New Pattern, Leather, 8 inch., with large and small pockets and strap, 6 pockets,	1.50 "
	New Pattern, Leather, 7 inch., with large and small pockets and strap, 9 pockets,	2.00 "
No. 1704/4.	Soft Leather, 6½ inch., with double pockets, 4 pockets, ..	1.90 "
	" " 6½ " " " " 5 " .	1.25 "
No. 523.	Combination Hook and Fly Book, 7 inch., with new pattern clips, 4 pockets,	1.75 "
	Combination Hook and Fly Book, 8 inch., with new pattern clips, 4 pockets,	2.00 "

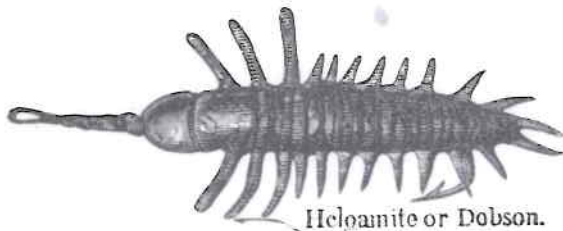
ARTIFICIAL INSECTS, ETC.



Fine Insects for Trout, 35 cents each, \$3.50 per dozen.

Fancy Silk Body Bass Bugs,	25 cents each.
Humble Bee,	20 " "
Grasshopper,	20 " "
Lady Bug,	20 " "
House Fly,	20 " "
Best Grasshopper,	30 " "
" Cricket,	30 " "

ARTIFICIAL INSECTS—(Continued).



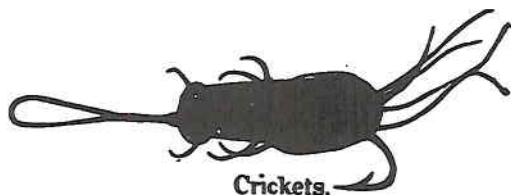
Helgamite or Dobson.

Soft Rubber Helgamite or Dobson, (Large or Small,) 40 cents each.



Grasshoppers.

Soft Rubber Grasshopper, 25 cents each.



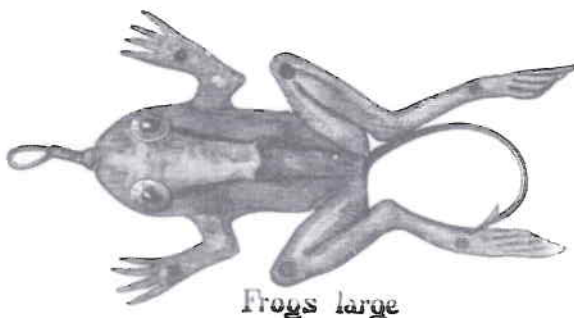
Crickets.

Soft Rubber Cricket, 25 cents each.



Frogs small.

Soft Rubber Frog, (Small,) 25 cents each.

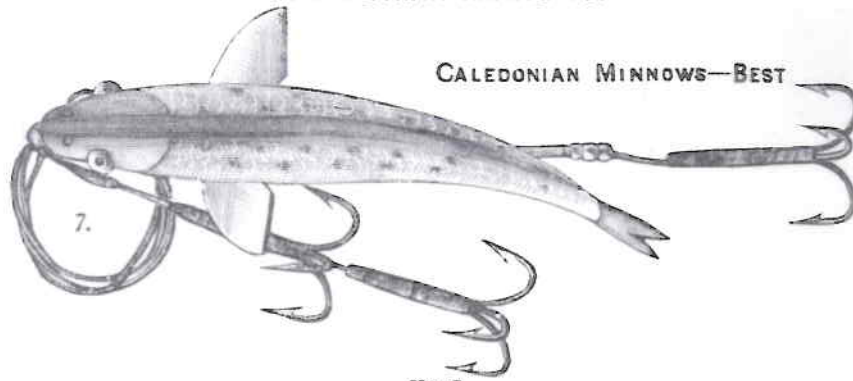


Frogs large

Soft Rubber Frog, (Large,) 40 cents each.

ARTIFICIAL MINNOWS.

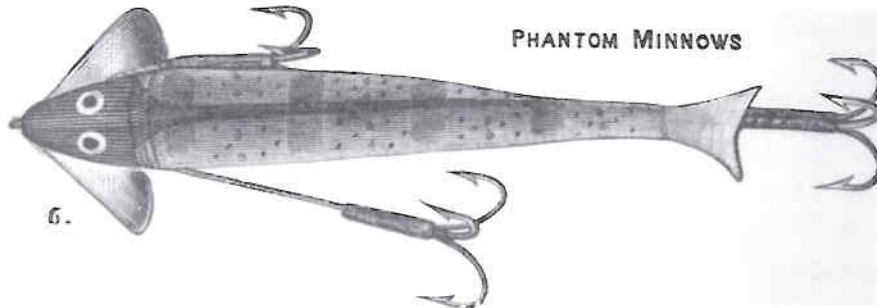
CALEDONIAN MINNOWS.



	No. 7.						
	Nos. 2	3	4	5	6	7	8
Length,	1¾	2	2⅞	2½	3	3¼	3¾ inches.
	.40	.40	.40	.40	.50	.60	.70 each.

CELEBRATED PHANTOM MINNOW.

Made of Silk, coated with rubber, very light, desirable Bait for Black Bass and Pickerel.



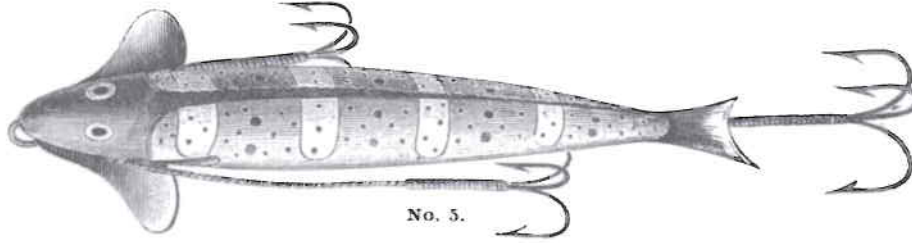
	No. 6.							
	Nos. 1	2	3	4	5	6	7	8
Length,	1¾	2¼	2½	3	3½	4	4¼	4½ inches.
	.70	.70	.70	.70	.70	.80	.90	\$1.00 each.

E. VOM HOFE'S NEW WHITE PHANTOM.

The most Killing Bait for Black Bass.

	Nos 1	2	3	4	5	6	7	8
Length, 1¾	2¼	2½	3	3½	4	4¼	4½ inches.	
	.70	.70	.70	.70	.70	.80	.90	\$1.00 each.

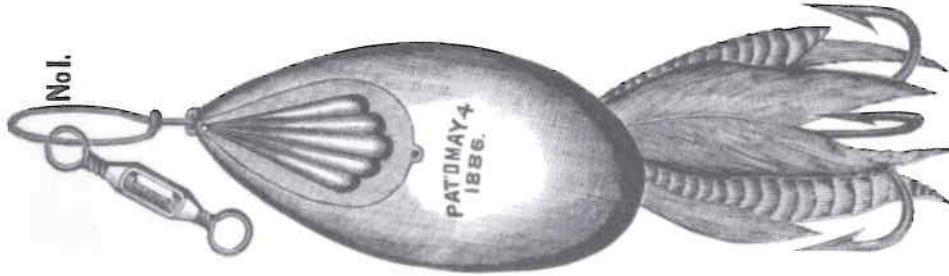
E. VOM HOF'S SOLE SKIN PHANTOM.



Nos. 1	2	3	4	5	6	7	8
Length, 1¾	2¼	2½	3	3½	4	4¼	4½ inches.
.75	.75	.75	.75	.75	.85	\$1.00	1.15 each.

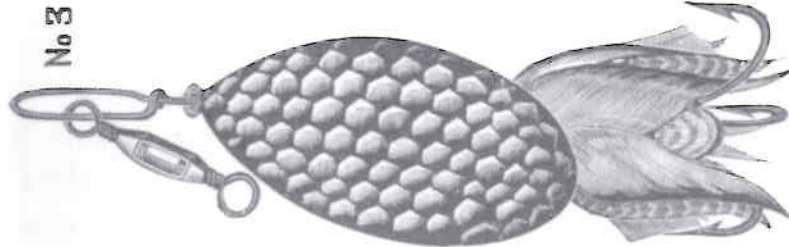
TROLLING BAITS.

PATENTED PICKEREL BAIT.



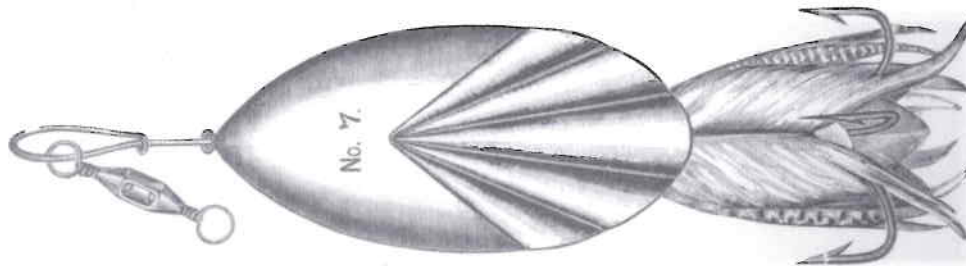
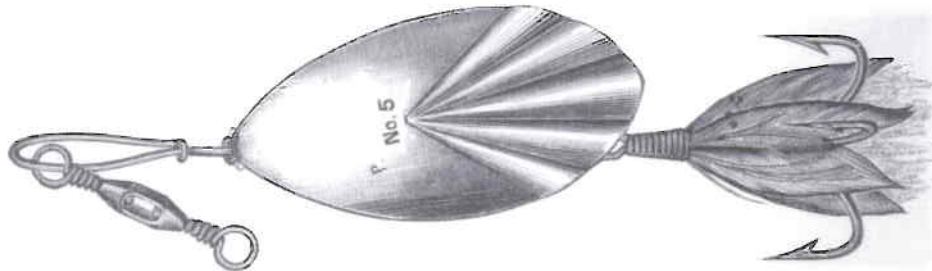
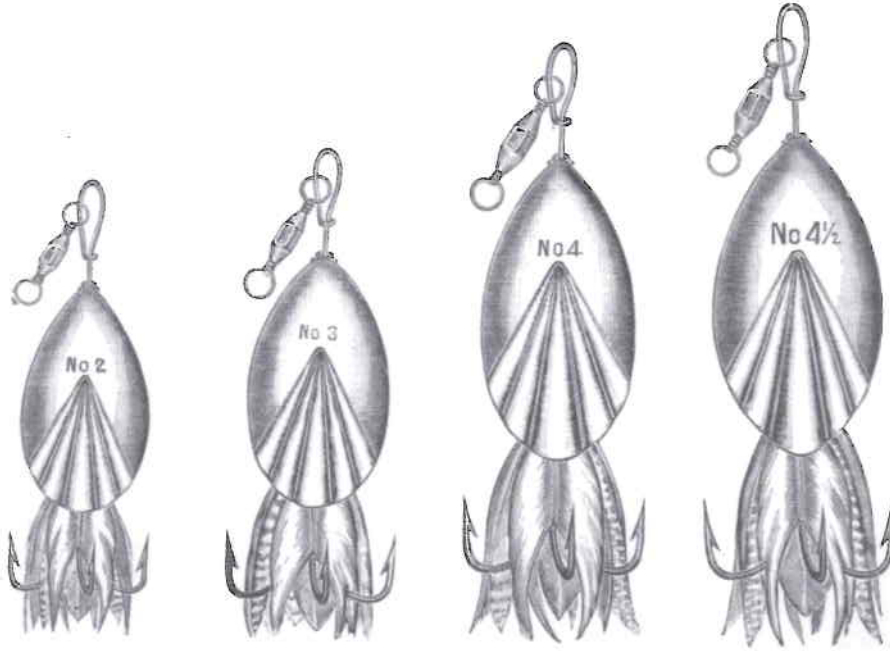
Nos. 2 0	1 0	1	2	3	4	5	6	7
.30	.30	.30	.25	.25	.25	.20	.20	.20 each.

HAMMERED TROLLING BAIT.



Nos. 2 0	1 0	1	2	3	4	5	6	7
.30	.30	.30	.25	.25	.25	.20	.20	.20 each.

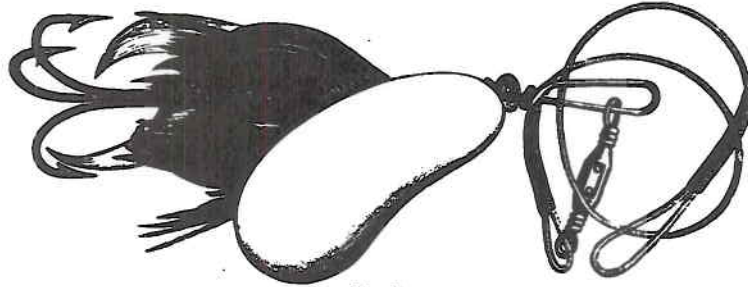
NEW FLUTED BAIT.



Nos.	2	3	4	4½	4¾	5	6	7	8
	.30	.30	.35	.35	.35	.40	.40	.50	.50 each.



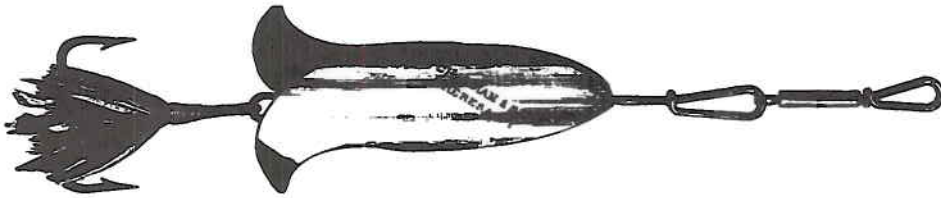
FLY SPOON.



No. 5.

Nos.	3	4	5	6	7	8
	.50	.50	.40	.40	.30	.30 each.

CHAPMAN'S MINNOW PROPELLER.



Nos.	1/0	1	2	3	4	5
	.80	.75	.65	.55	.50	.45 each.

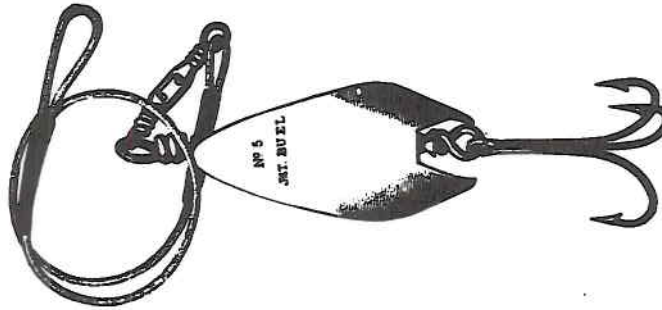
CHAPMAN'S ALLURE BAIT.



Nos.	2/0	1 0	1	2	3
	.75	.65	.55	.50	.50 each.

CHAPMAN'S PICKEREL BAIT.

Nos.	1	2	3	4	5	6	7	8	ON CARDS.		
	.60	.50	.45	.35	.30	.25	.25	.25	.25	.25	each.

BUEL'S SPINNING BAIT.

Nos.	2/0	1/0	1	2	3	4	5	6	7	
	.65	.65	.55	.55	.55	.40	.40	.40	.30	each.

HILL'S SINGLE SPOON BAIT.

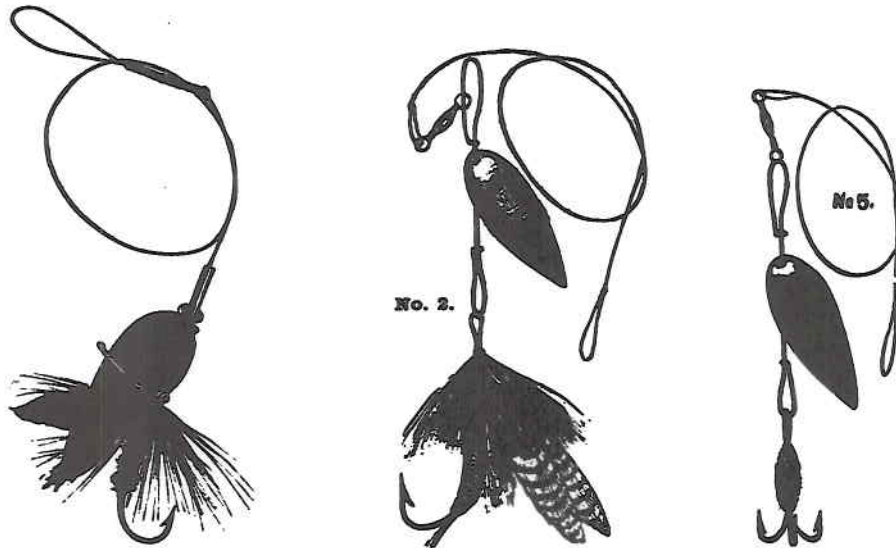
Nos.	1	1½	2	2½	3	3½	4	5	
	.40	.45	.50	.55	.60	.65	.70	.75	each.

EXTRA QUALITY FANCY MOTTLED PEARL SPOON (Feathered Hooks).

Nos. 1, 2, 3, 4, 5,75	each.
---------------------------	-----	-------

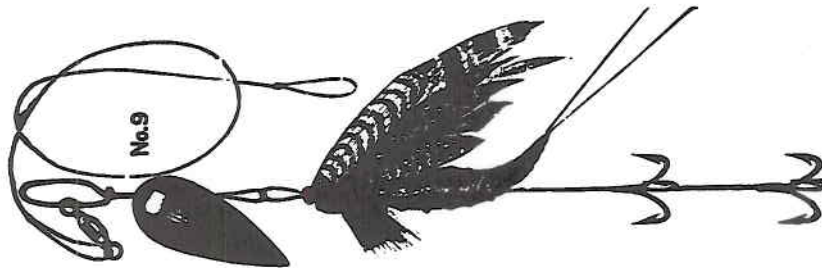
An excellent Spoon for Black Bass and Pickerel.

TROUT, BASS OR PICKEREL BAIT ON CARDS.



Trout, Oval, single Fly, No. 4,25 each.
Trout, single Fly, Nos. 2, 3, 4,30 "
Trout, treble Hook and Swivel, Nos. 5, 10, 11,.....	.30 "

ADIRONDACK SPINNER.



Nos. 6, 7, 8, 9, (No. 6 is the largest,).....	.70 each.
---	-----------

FEATHERED TREBLE HOOKS, (Eyed.)

For Spoon Baits, Etc.

Nos. 7/0	6/0	5/0	4/0	3/0	2/0	1/0	1 to 6
.20	.15	.15	.15	.15	.15	.15	.10 each.

For sizes, see Treble Hooks.

SQUIDS.

BLOCK TIN BURNISHED, WITH PATENT SWIVEL.

	Nos. 6	5	4	3	2	1
Length,	3	3½	4	4½	5	5½ inches.
	.25	.30	.35	.40	.45	.50 each.

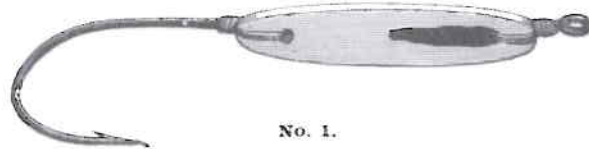
ROUND BONE, MOUNTED WITH SWIVEL.

Length,	2	2½	3	3½	4	4½	5	5½	6 inches.
	.20	.25	.30	.35	.40	.45	.50	.55	.60 each.

ROUND WOOD, MOUNTED WITH SWIVEL.

Length,	4½	5½	6½ inches.
	.40	.50	.60 each.
Large Pearl, with Swivel,	\$1.00 to 1.50 "		

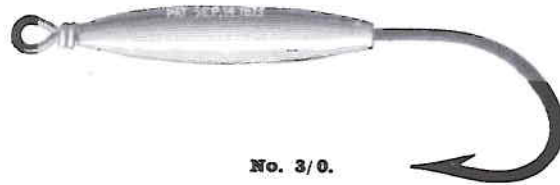
PEARL WEAKFISH AND SNAPPING MACKEREL.



No. 1.

	Nos. 1	2	3	4	5	6	7
Length of Pearl,	2	1 7/8	1 5/8	1 3/8	1 1/8	1 1/16	1 1/16 inches.
	.25	.25	.20	.20	.20	.15	.15 each.
Bone Fish Shape, (length of Bone, 1 5/8 inch.,)25 "						

BLOCK TIN WEAKFISH and SNAPPING MACKEREL WITH PATENT SWIVEL.



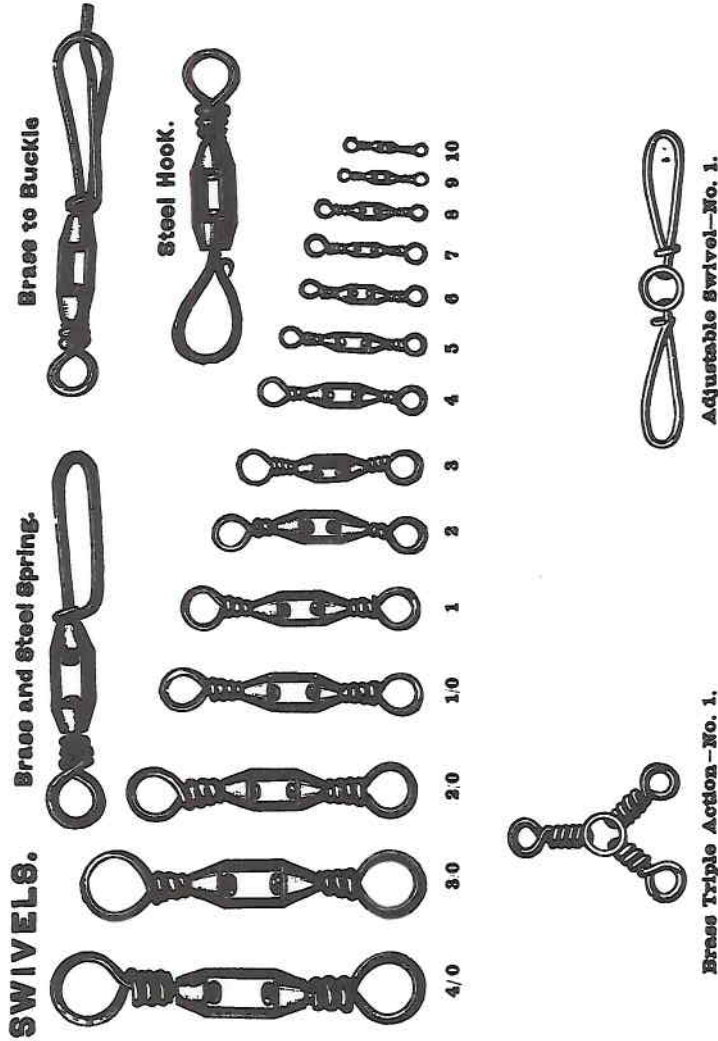
No. 3/0.

	Nos. 3/0	2/0	1/0	1	2	3	4	5	6	7
Length of Tin,	1 5/8	1 1/2	1 3/8	1 3/8	1 3/8	1 5/16	1 5/16	1 5/16	1 1/4	1 1/4 inches.
	.75	.70	.70	.60	.60	.60	.60	.60	.60	.60 per doz.

Block Tin Burnished, with Patent Swivel—No. 3.



SWIVELS.



	Nos.	5/0	4/0	3/0	2/0	1/0	1	2 to 10	
Best Box Swivel (Brass or Steel),	\$	1.25	.90	.75	.65	.45	.35	.35	per doz.
" Brass Adjustable Swivel,				1.20	.90	.75	.65	.65	"
" " Triple Action "				1.50	1.00	.80	.65	.65	"
" " and Steel Spring "					.90	.75	.60	.60	"
" Steel Hook Swivel,75	.65	.45	.35	.35	"
" Brass to Buckle Swivel,75	.60		"
Rotary Link Swivel,10 each, 3 for	.25.
Brass Swivel Spreader,10 " 3 "	.25.

CORK FLOATS.

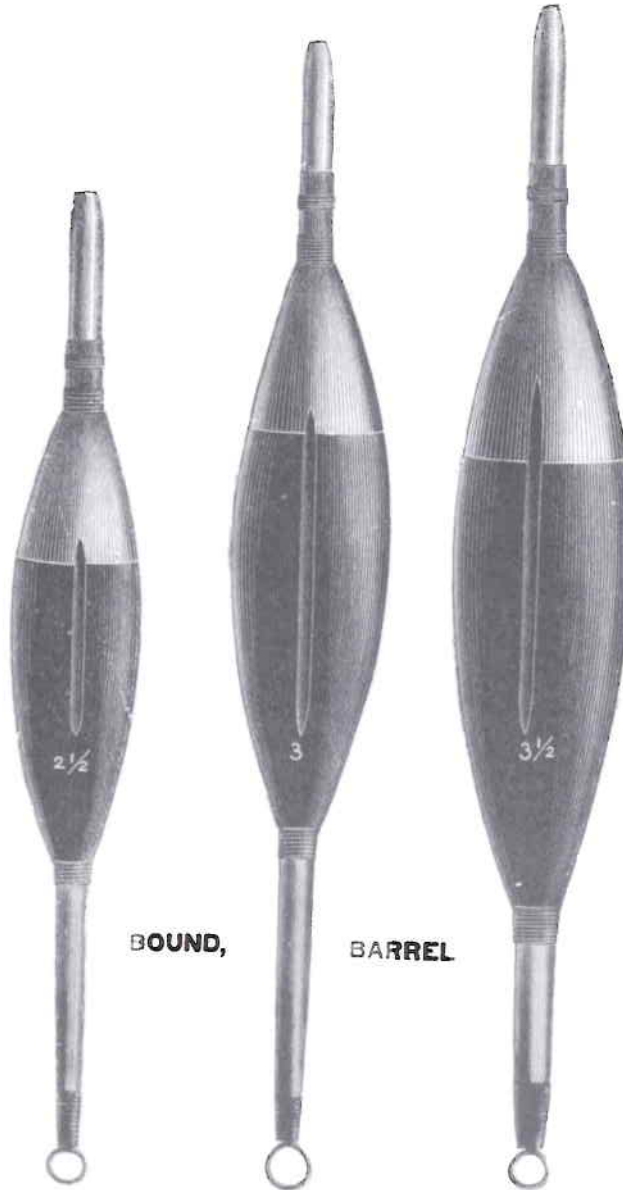


BEST BOUND EGG.

Length of Cork,	1	1 1/4	1 1/2	1 3/4	2	2 1/4	2 1/2	3	3 1/4	3 1/2 inches.
	6	8	8	10	12	15	18	20	25	30 cts. each.

CORK FLOATS—(Continued.)

BEST BOUND BARREL.



BOUND,

BARREL

Length of Cork,	2 1/2	3	3 1/2	4	4 1/2	5	5 1/2	6 in.
	.10	.12	.15	.20	.20	.25	.30	.35 each.

BASKETS.



	Nos. 1/0	1	2	3	4	5	6
Trout Baskets, Capacity,..	6	9	12	20	25	30	35 lbs.
	.70	90	\$1.00	1.25	1.60	2.25	2.75 each.

Folding Canvas Creels furnished at advertised prices.

SQUARE FISHING BASKETS.

With Folding Handle and Tray.

Large, Measure	19	in. long,	10½	in. wide,	10	in. deep,	\$2.75 each.
Medium, "	16	" "	9	" "	8	" "	2.50 "
Small, "	14½	" "	8	" "	7	" "	2.25 "

The above Baskets are made of the finest French Willow.

ENTIRELY NEW.

THE NONPAREIL FISH STRINGER.

Patented September 18th, 1888.



No Fishing Outfit Complete without it.

How to String a Mess of Fish without making a Mess of it.

The most simple and practical device ever conceived for quickly and easily securing and removing Fish.—25 cents each.

BAIT BOXES.



Crescent, 20 cts.



Basket, 10 cts.



Padlock, 15 cts.



Oval, 15 cts.

STRAPS.

Plain Leather Bait Box Strap,15	each.
“ “ Basket “25	“
“ “ and Webbing Centre Strap,35	“
Combination Leather and Webbing Centre Strap,75	“

BAIT PAILS.

EXCELSIOR BAIT PAIL.

PATENT APPLIED FOR.

THE FISHERMAN'S FRIEND.

This Pail is Substantially Made of Heavy Tin, and Handsomely Japanned.

The inside pail can be removed and placed in the water the same as a "fish car," thus keeping the bait alive for an indefinite time. The pan which fits in the inside pail can be raised and lowered, thus affording an easy selection of bait without wetting the hand. The bait is kept alive during transportation (the critical time) by the continuous flowing of the water through the perforations, thus causing a never failing supply of fresh air.



PAIL COMPLETE.

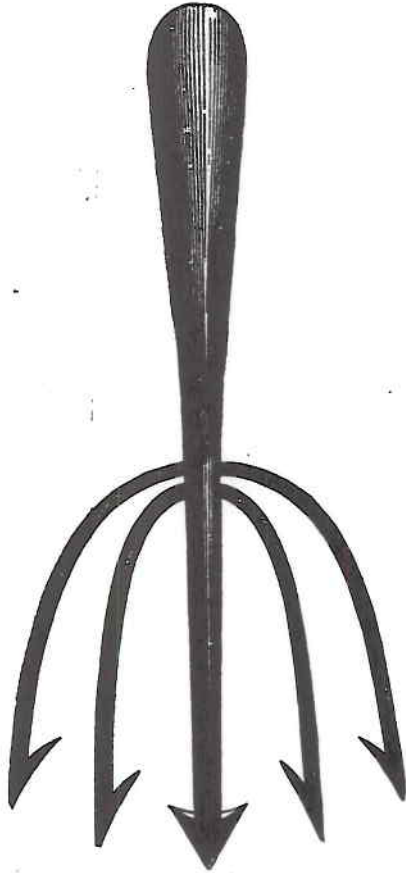


INSIDE PAIL REMOVED.

This is the only practical bait pail in the market, and no fisherman can afford to be without one.

Excelsior Bait Pail,	Sizes, 8	12 quarts.
	\$2.25	3.00 each.
Gem Bait Pail,	Sizes, 6	8
	\$1.75	2.25
		12 quarts.
		3.00 each.

SPEARS.



FISH.



EEL.

	Fish Spears, Nos.		1	2	3	4
Prongs,.....	3	5	.40	.50	.75	1.00 each.
Eel Spears,.....		6		8	10 Prongs.	2.00 each.
			\$1.50		1.75	

Any Style of Spears or Harpoons made to order.

GAFF HOOKS.



	No. 3.	Nos. 1	2	3
Plain Steel Gaff, tinned to tie on,.....		.50	.75	\$1.00 each.
Steel Polished and tinned, with Screw Socket,..	\$1.00		1.50	2.00 each.
		Nos. 1, 2,	3, 4,	5

GAFF HOOKS WITH HANDLES.

Plain Steel Gaff on Long Ash Handle,
Cuttyhunk Style, No. 3, \$2.00 each.
Nos. 1, 2, 3, 4, 5
Plain Bamboo H'dle, with Gaff, \$1.50 2.00 2.50 each.
Jointed " " " " 2.50 3.00 3.50 "
With Long, Plain Bamboo Handle,
(German Silver Mounted,) 4.00 "

TARPON GAFF HOOKS (in 3 qualities.)

No. 1. Extra Heavy Steel Polished and
Tinned, with Screw, with one Piece
German Silver Mounted Ash Handle,
Waterproof Socket, \$4.00 each.
No. 2. Same as No. 1, with barbed Hook, 4.50 "
" 3. " " 2, " " " 5.00 "

TELESCOPIC GAFF HOOKS.

No. 1. 3 Joints, plain wood hand piece,
first and second joint round brass, steel
hook, no safety notch, closed 15 inch.,
open 36 inch., \$3.50 each.
No. 2. 3 Joints, plain hand piece, first
joint burnished steel, second joint oval
brass, third joint steel hook with safety
notch, closed 15 inch., open 36 inch., 6.00 "
No. 3. 3 Joints, same general description
as No. 2, first quality, second joint
polished brass square, third joint steel
hook, with safety notch, closed 15 in.,
open 36 inch., 8.50 "
No. 4. 2 Joints, same as No. 3, joints
closed 19 inch., open 34 inch., 6.00 "



ROD CASES.

With Handles and Plate for Name.



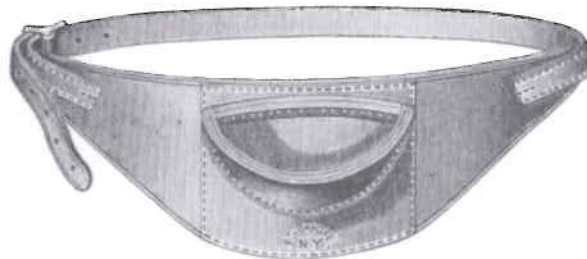
Length from 40 to 50 inch. Nos.	1	2	3	4	5	6	7
Inside Diameter,.....	2	2½	3	3½	4	4½	5 inch.
	\$4.25	4.50	5.00	5.25	5.75	6.75	7.50 each.
The above Cases, with Patent Lock Buckle,.....							.50 extra.

We also make a special line of Rod Cases for Salmon Rods, and ordinary lengths of extra fine and heavier leather.

PRICES ON APPLICATION.

Wood Rod Case for Trout Rod, with handle, strap and buckle,..... \$1.25 each.

ROD BELT.



No. 2.

Nos.	1.	For striped Bass or Salmon,.....	\$2.50 each.
	2.	Improved for Tarpon,.....	3.50 "

REEL CASES.

Extra Fine Sole Leather and Chamois Lined.



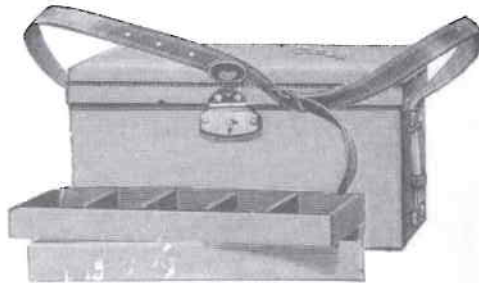
For Trout Click Reel, Nos.	4 to 2,.....	\$1.50 each.
" Multiplier	" " 4 to 2,.....	2.00 "
" " " "	" " 1/0 to 2/0,.....	2.50 "
" " " "	" " 2/0 to 4/0,.....	3.00 "
" " " "	" " 4/0, extra heavy,.....	3.50 "
" Grise	"	2.50 "
" Salmon	"	3.00 "

TACKLE CASES.



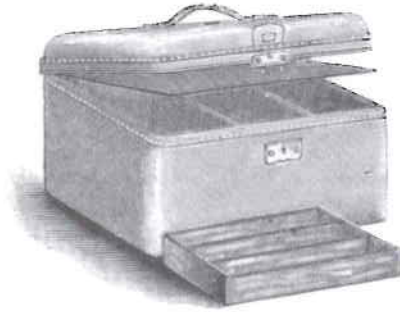
Nos. 2, 3 and 4.

- No. 1. Tin, Black Japanned, Gold Stripes, 7 inch. long, $5\frac{1}{2}$ inch. wide, $1\frac{3}{4}$ inch. deep, 5 Compartments for hooks, pliers, file, stone, &c., \$1.50 each.
- No. 2. Tin, Black Japanned, Gold Stripes, $9\frac{1}{2}$ inch. long, $6\frac{1}{2}$ inch. wide, 5 inch. deep, 3 Compartments, 1 Compartment Tray, space for 2 Reels, Fly Book under cover, Handle, Lock and Key, 3.25 each.
- No. 3. A Handsome Wood Case, 8 inch. long, $5\frac{1}{2}$ inch. wide, $4\frac{1}{2}$ inch. deep, 3 Compartments, 2 spaces for Reels, 1 Compartment Tray and space for Book under cover, nickel plated Handle on top, nickel plated Lock and Key, 2.25 each.
- No. 4. A Handsome Wood Case, $10\frac{1}{2}$ inch. long, $6\frac{1}{2}$ inch. wide, $5\frac{1}{2}$ inch. deep, otherwise the same as No. 3. 3.00 each.



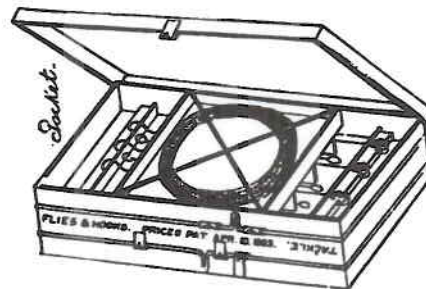
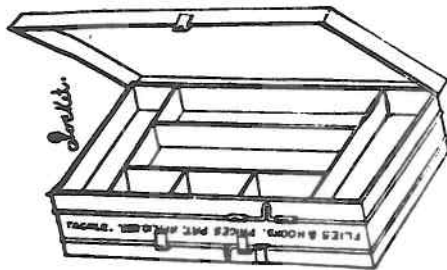
- No. 5. A Handsome Wood Case, covered with Leather, 13 inch. long, 6 inch. wide, 7 inch. deep, lined with German Linen, 2 Compartments; contains 2 Black Walnut Trays, one with compartments, Strap all around case, which can be used as shoulder strap or handle as desired, nickel plated Lock and German Silver Name Plate, \$7.00 each. ◀

TACKLE CASES—(Continued.)



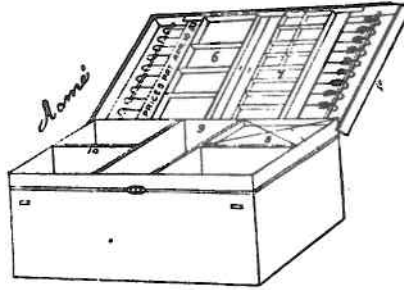
- No. 6. A Handsome Wood Case, covered with Leather, $10\frac{1}{2}$ inch. long, 9 inch. wide, $6\frac{1}{2}$ inch. deep, lined with Green Linen, 2 Compartments, with partitions to transform, 1 Tray, space for 2 large Reels, Fly Book, &c., Handle on top, nickel plated Lock and German Silver Name Plate, \$7.50 each.
- No. 7. Same style as No. 6. $12\frac{3}{4}$ inch. long, 10 inch. wide, $9\frac{3}{4}$ inch. deep, lined with Green Linen, 4 Compartments for large Reels, 1 Black Walnut Tray with 7 Compartments of which 3 Compartments will take 3 Celebrated Lines on Spools, and 4 Compartments for hooks, squids, &c., space under cover as shown in Cut No. 6, for book, gaff hook, and other fishing implements, Handle on top, nickel plated Lock and German Silver Name Plate,..... 12.00 each.

The above Cases, Nos. 5, 6 and 7, are of the finest leather, and made especially for E. vom Hofe according to his pattern.

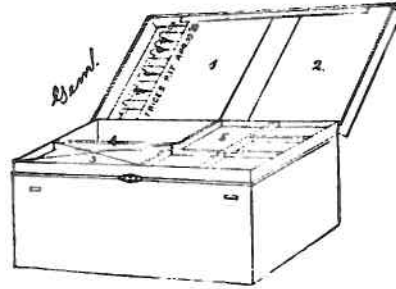


- Pocket Improved Tin, Black Japanned, Gold Stripes, $7\frac{3}{4}$ inch. long,
 • $3\frac{3}{4}$ inch. wide, $1\frac{3}{4}$ inch. deep; this is two Cases combined in one,
 one side being for flies, the other for spoons, hooks, sinkers, &c.,
 Cut shows both sides of Case,..... \$1.50 each.

TACKLE CASES—(Continued.)



Acme Improved, Tin, Black Japanned, Gold Stripes, 12 inch. long, 8 inch. wide, 5½ inch. deep. In the cut 6 and 7 are trays which fit into space marked 9, the bottom of this space (9) is fitted with cork for gangs, spoons, &c., 8 is a shallow tray for leaders, coiled lines, as desired, 10 is a removable division, Handle on top, with nickel snap lock,..... \$6.00 each.



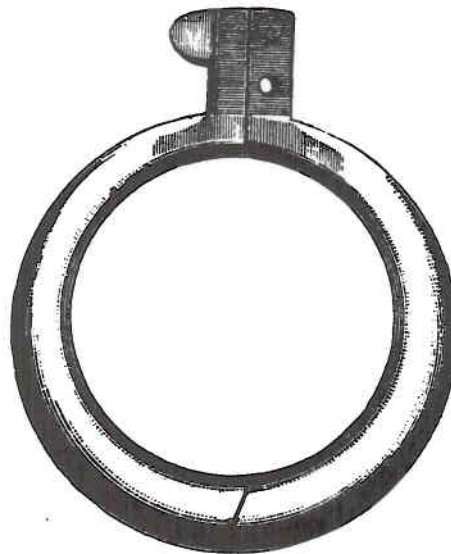
Gem Improved, Tin, Black Japanned, Gold Stripes, 9 inch. long, 6 inch. wide, 5 inch. deep. In the cut 1 and 2 are sliding doors, securely protecting the hooks and flies, and yet always ready for use. No. 3 is a shallow tray with cross wires for leaders. No. 4 is a removable division. No. 5 is a shallow tray; beneath tray 5 at bottom of case, is a division separating it into two parts; one side is provided with cork for gangs, the other for large sinkers and floats, \$4.00 each.

KNIVES.

Iron Knives for Cutting Bait,.....	.15 each.
Butcher " " " "25 "
Pocket " " " " small,.....	.25 "
" " " " large,.....	.30 "
Fish Scaling and Bait Knife,.....	.50 "

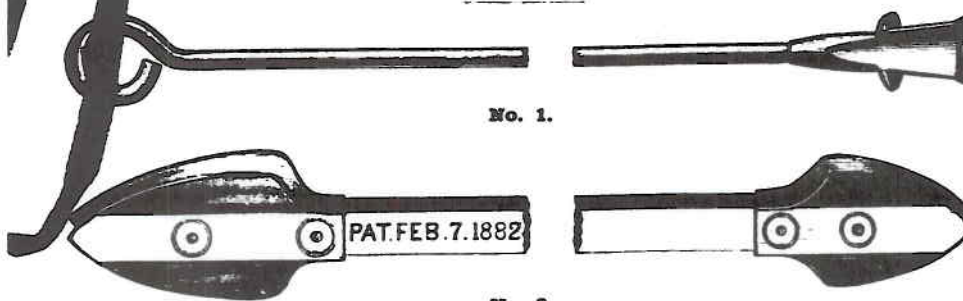
CLEARING RING.

For Releasing Line when Caught.



Brass pointed, (as per Cut, 2 1/4 in. diameter,)60 each.

DISGORGERS.



No. 1.

No. 2.

- | | | |
|---------|---|-----------|
| Nos. 1. | For Trout, Perch and other Small Fish,..... | .20 each. |
| " 2. | " Striped Bass, Weakfish, &c.,..... | .50 " |
| " 3. | " Bluefish and Large Fish,..... | .75 " |

SUNDRIES.

Leather Reel Guards,	\$0.15 each.
Thumbstall, Knit, (\$1.50 per dozen),15 "
Cutting Nippers, Stubs, 4 and 4½ inch.,75 "
" " " Nickel Plated,	1.25 "
Screw Driver for Tackle Box,25 "
File for Sharpening Hooks,25 "
Arkansas Stone for Sharpening Hooks,10 "
Line Winder, small, 5 cents; large,10 "
Pocket Oilers,15 "
Bottle of Oil,20 "
Scissors for Cutting Bait,45 "
Hind's Black Fly Cream,25 "

HEAD NETS.

A Sure Protection against Mosquitoes and Flies.



Mosquito Bar, with Case,75 each.
--------------------------------	-----------

SPRING BALANCES.



BEST ENGLISH QUALITY.

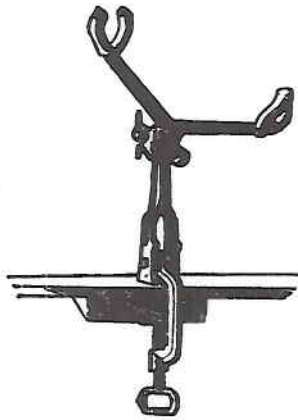
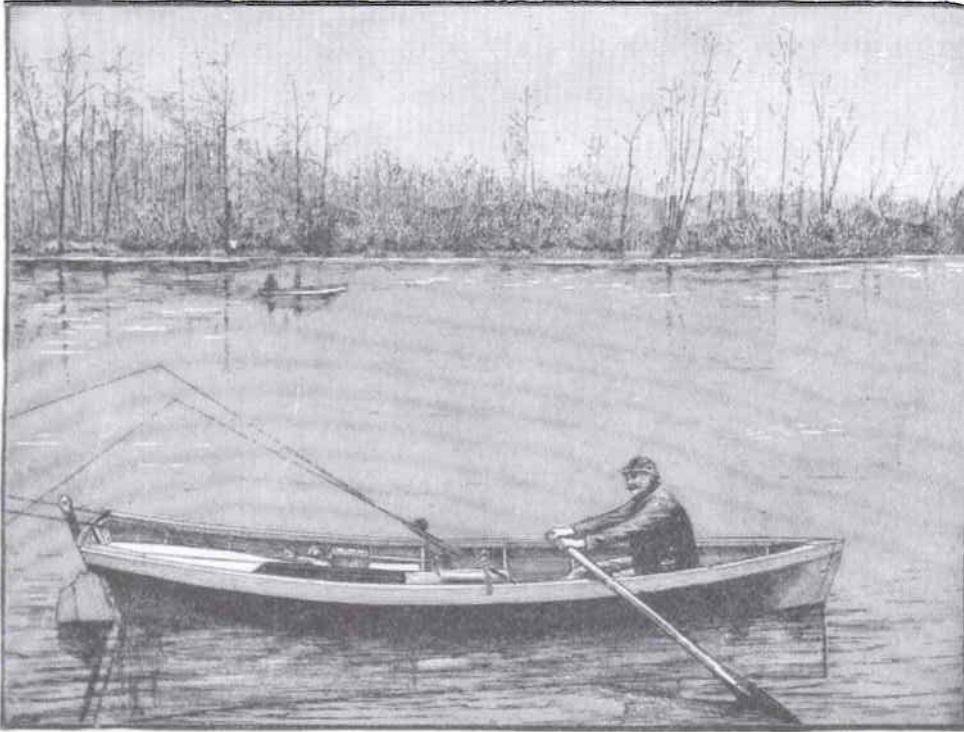
2 lbs. by 1 ounce, Brass, \$1.25 each.	20 lbs. by ¼ ounce, Brass, \$1.50 each.
7 " " ¼ " " 1.10 "	20 " " ½ " " 1.25 "
10 " " ¼ " " 1.25 "	30 " " ½ " " 1.50 "
12 " " ¼ " " 1.40 "	40 " " ½ " " 1.75 "
12 " " ½ " " 1.10 "	50 " " ½ " " 2.00 "
16 " " ½ " " 1.15 "	60 " " ½ " " 2.50 "



NOVELTY.

Novelty Scale, 15 lbs. by 2 oz., Nickered,	\$0.40 each.
Tarpon "	1.25 "

THE UNIVERSAL FISH ROD HOLDER.



This novel device meets a long felt want. Working in a socket, it can be adjusted to any angle or any direction, and is fastened to either gunwale or seat of boat, will take any Rod, and enables one to dispense with the services of a guide or rower, and use one or more Rods comfortably.

Tinned and Strongly made, \$1.50 each.